

Click to view price, real time Inventory,  
Delivery & Lifecycle Information ;

## EVP-ASDB1A

Panasonics

Tactile Switches 6mm Long Stroke 2 terminal

Any questions, please feel free to contact us.

[info@kaimte.com](mailto:info@kaimte.com)

6 mm Square Long Travel 2 terminals  
SMD Light Touch Switches

Type: **EVPAS**



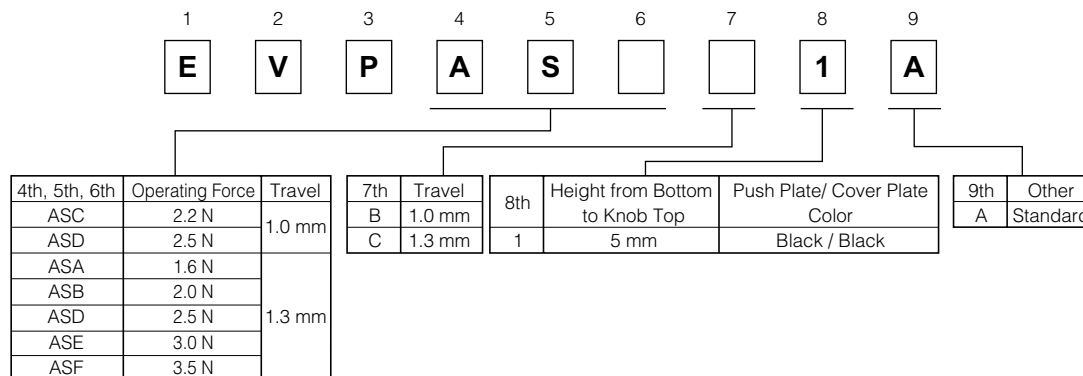
■ **Features**

- External dimensions : 6.0 mm×6.1 mm, Height 5.0 mm (Including the push plate)
- Steady and low contact resistance (100 mΩ max.)
- Excellent solderability (J-bent-type terminals)

■ **Recommended Applications**

- Operating switches for car electronic equipment.
- Input on operating switches for telephones, electronic musical instruments, etc.

■ **Explanation of Part Numbers**



■ **Specifications**

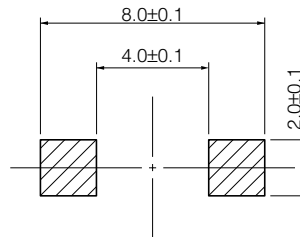
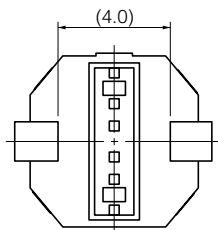
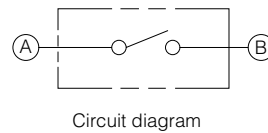
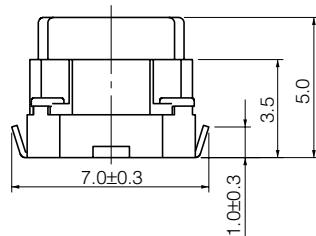
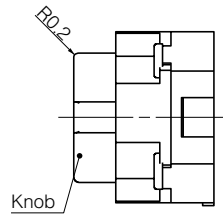
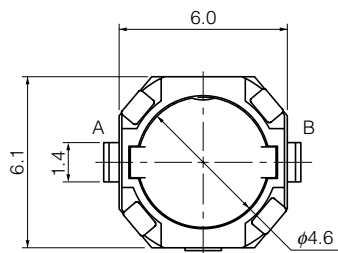
Type		Snap action/Push-on type SPST	
Electrical	Rating	10 μA 2 Vdc to 50 mA 12 Vdc (Resistive load)	
	Contact Resistance	100 mΩ max.	
	Insulation Resistance	100 MΩ min. (at 100 Vdc)	
	Dielectric Withstanding Voltage	250 Vac for 1 minute	
	Bouncing	10 ms max. (ON, OFF)	
Mechanical	Operating Force	1.6 N±0.5 N, 2.0 N±0.6 N 2.5 N±0.6 N 3.0 N±0.8 N 3.5 N±1.0 N	2.2 N±0.6 N 2.5 N±0.6 N
	Travel	1.3 mm±0.2 mm	1.0 mm±0.2 mm
Endurance	Operating Life	3.5 N type: 30000 cycles min. 1.6 N, 2.0 N, 2.2 N, 2.5 N, 3.0 N types: 100000 cycles min.	
Operating Temperature		-40 °C to +90 °C	
Storage Temperature		-40 °C to +90 °C (Bulk) -20 °C to +60 °C (Taping)	
Minimum Quantity/Packing Unit		2000 pcs. Embossed Taping (Reel Pack)	
Quantity/Carton		10000 pcs.	

Design and specifications are each subject to change without notice. Ask factory for the current technical specifications before purchase and/or use. Should a safety concern arise regarding this product, please be sure to contact us immediately.

■ Dimensions in mm (not to scale)

EVPASP

(Embossed Taping)

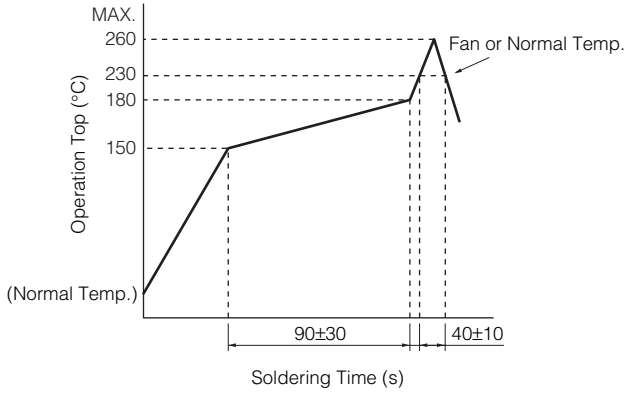


PWB land pattern for reference

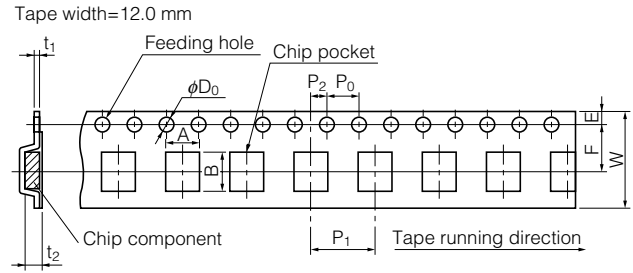
Part Numbers	Operating Force	Travel	H=Height	Push Plate Color	Operating Life
EVPASCB1A	2.2 N	1.0 mm	5.0 mm	Black	100000 cycles
EVPASDB1A	2.5 N	1.0 mm	5.0 mm	Black	100000 cycles
EVPASAC1A	1.6 N	1.3 mm	5.0 mm	Black	100000 cycles
EVPASBC1A	2.0 N	1.3 mm	5.0 mm	Black	100000 cycles
EVPASDC1A	2.5 N	1.3 mm	5.0 mm	Black	100000 cycles
EVPASEC1A	3.0 N	1.3 mm	5.0 mm	Black	100000 cycles
EVPASFC1A	3.5 N	1.3 mm	5.0 mm	Black	30000 cycles

Design and specifications are each subject to change without notice. Ask factory for the current technical specifications before purchase and/or use. Should a safety concern arise regarding this product, please be sure to contact us immediately.

## Recommended Reflow Soldering Conditions



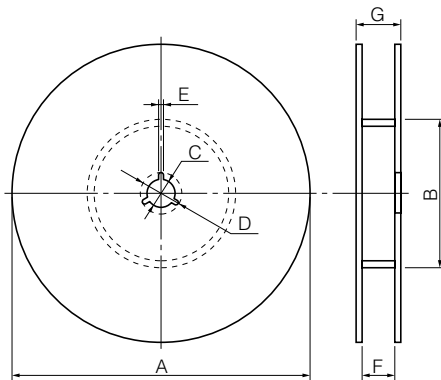
## Embossed Carrier Taping



Unit: mm

Part No.	Height	A	B	W	F	E	$P_1$	$P_2$	$P_0$	$D_0$ Dia.	$t_1$	$t_2$
EVPAS	5.0	6.8±0.2	7.7±0.2	12.0±0.3	5.5±0.1	1.75±0.10	8.0±0.1	2.0±0.1	4.0±0.1	1.5 <sup>+0.1</sup> <sub>-0</sub>	0.4±0.1	5.25±0.20

## Standard Reel Dimensions in mm (not to scale)



Item	A	B	C	D	E
Rate (mm)	$\phi 380.0 \pm 2.0$	$\phi 80.0 \pm 1.0$	$\phi 13.0 \pm 0.5$	$\phi 21.0 \pm 1.0$	2.0±0.5

Item	F	G
Rate (mm)	13.5±1.0	17.5±1.0

# Mouser Electronics

Authorized Distributor

Click to View Pricing, Inventory, Delivery & Lifecycle Information:

[Panasonic:](#)

[EVP-ASAC1A](#) [EVP-ASBC1A](#) [EVP-ASDC1A](#) [EVP-ASEC1A](#) [EVP-ASFC1A](#) [EVP-ASDB1A](#)